

# Sample Q & A

## - Question

### Question 1 [Trauma]

A 14-year-old male patient presents 4 months after percutaneous pinning of his left hip. His radiograph is shown. Which of the following is his diagnosis?

1. Osteonecrosis of the left hip
2. Hardware failure
3. Nonunion of the fracture
4. Postoperative infection

→ 正解は5ページ



Copyright © Journal of Bone and Joint Surgery, All Rights Reserved.

# Sample Q & A

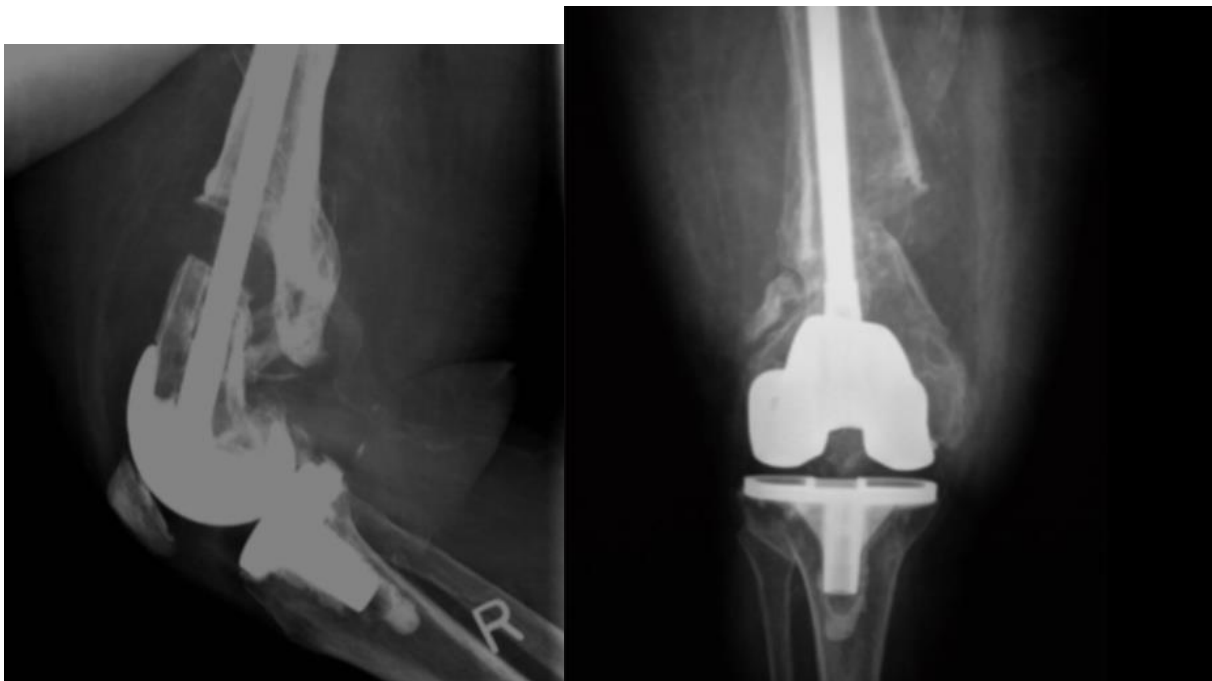
## - Question

### Question 2 [Knee]

Which of the following is the best option for early weight bearing for a supracondylar fracture nonunion in osteoporotic bone (shown)?

1. Open reduction and internal fixation with a locking plate
2. Intramedullary nail placed through the box of the knee prosthesis
3. Nonoperative management with a knee immobilizer
4. Distal femoral replacement

→ 正解は5ページ



# Sample Q & A

## - Question

### Question 3 [Hip]

A patient is scheduled for a total hip arthroplasty to the right hip. Based on preoperative imaging (shown), which of the following may be a disadvantage to using a blade type stem?

1. Inability to correct for version variance
2. Failure to achieve metaphyseal fixation due to femoral morphology
3. Increased rate of intraoperative femoral fracture
4. Decreased rotational stability leading to dislocation

→ 正解は5ページ



# Sample Q & A

## - Question

### Question 4 [Spine]

A 77-year-old male patient with balance changes, neck pain and progressive changes in upper extremity dexterity presents. On examination, the patient has a positive Hoffman's sign and a positive Romberg's sign. His body mass index (BMI) is 37 kg/m<sup>2</sup>. Radiographs of the cervical spine demonstrate multilevel degenerative disc disease with a kyphotic cervical spine alignment and C2-C7 Cobb angle of 25° .  
If surgery is considered, which of the following factors is a contraindication to laminoplasty?

1. Positive Hoffman's sign
2. Positive Romberg's sign
3. Cervical kyphosis of > 25°
4. BMI of 37 kg/m<sup>2</sup>

→ 正解は5ページ

# Sample Q & A

## - Answer

### - Question 1

- Answer: **1. Osteonecrosis of the left hip**

### - Question 2

- Answer: **4. Distal femoral replacement**

### - Question 3

- Answer: **2. Failure to achieve metaphyseal fixation due to femoral morphology**

### - Question 4

- Answer: **3. Cervical kyphosis of  $> 25^\circ$**